

PITTWATER RSL BUS TOURS

WITH **LYNDA HATCHER**

BOOKINGS: 9997-3833

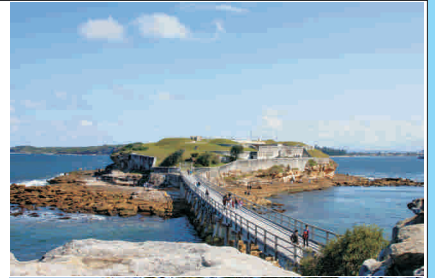


Bare Island, Georges River & Southern beaches Tour Monday, 6th June 2011

Our tour commences with morning tea at La Perouse before our guided tour of Bare Island. Located within the Botany Bay National Park, Bare Island Fort is situated at the mouth of Botany Bay. The fort was built in 1885 to protect the 'back door' of Sydney from attack by sea. Cross the wooden bridge (approximately 50 meters) and enter a world of military pride, fire engineering and great deception. Our guided tour will last approximately one hour.

Our two course lunch is at St George Sailing Club, at the mouth of Georges River, overlooking the river. Here you will have a choice of three main courses, dessert and tea or coffee while enjoying the views from our reserved seating.

Following lunch we will tour the southern beaches and coastline from La Perouse on the northern entrance of Botany Bay to Watsons Bay. We will travel back through Maroubra, Coogee, Bronte, Tamarama and Bondi beaches and finish up through Vaucluse, Rose Bay, Double Bay and Woollahra. Cost per person is \$60 including morning tea, two course lunch with tea or coffee, guided tour and luxury coach touring. Departs 9:00am and returns approximately 4:30pm.



Winter Yulefest - Fountaindale Grand Manor Yulefest Luncheon Monday, 4th July 2011

Join us for a traditional Christmas Luncheon in the Southern Highlands. Our venue is the stately Fountaindale Grand Manor (previously Ranelagh House) in Robertson where we will be treated to a wonderful 3 course lunch. Silver service, of course! – Just as you would expect from such an elegant dining room. Delicious food, musicians and all the Christmas trimmings, including a piper, make this a truly memorable day.

Fountaindale Grand Manor was built in 1924 and opened as the Hotel Robertson. It has had an interesting history since then. In 1930 it was bought as an elite Country Club and renamed "Ranelagh House" after "Ranelagh Gardens" in London. Subsequently this Club closed, and during World War II the building was used as a W.A.A.A.F. depot. In 1947, the property became St. Anthony's College – a Franciscan Friary and Seminary. It was during this period that the fine stained glass windows, still in the building today, were installed. The College had its own railway platform on the Moss Vale – Unanderra line, which is still used today. In 1972 the property reverted to private ownership and has operated successfully as a guest house since then. In 2007 it was sold and renamed Fountaindale Grand Manor.

The cost is \$82 per person which also includes morning tea at Nepean Dam, the Yulefest lunch and luxury coach transport. The Manor is fully licensed. Departure time will be 8:15am with return at approximately 5:30pm.



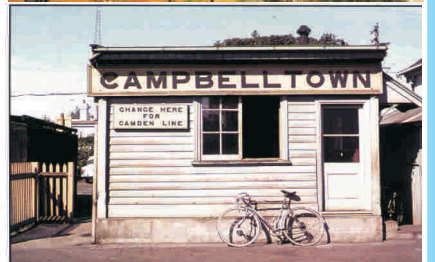
Mount Annan Botanic Gardens & Campbelltown Monday, 1st August 2011

Mount Annan is the native plant garden of the Botanic Gardens Trust. It covers 410 hectares making it the largest botanical garden in Australia. Until 1984 it was grazing farmland when the Trust acquired the site. The first plantings were in 1985 and the gardens opened to the public in 1988. Plantings are designed to display the diversity of Australian flora and will eventually include many of our 25,000 known plant species.

Gathered here is a collection of the remarkable plants which make up the fascinating flora of the continent, including many rare endangered species not previously cultivated. Our ranger/guide will explain the important research side of the gardens during our tour, most of which will be conducted on board the coach. At the conclusion of the tour we will have time to explore parts of the garden on foot or if you prefer simply take in the beautiful surroundings from one of the many vantage points.

Our afternoon will be spent in the Campbelltown district with lunch at the Catholic Club. Following lunch we will travel around this rapidly expanding area, taking in many of its fine heritage buildings and learning of its early history.

Cost per person is \$45 including morning tea, guided tour of the garden and the two course luncheon special at the Club. Departs at 8:30am and returns at approximately 4:30pm.



**All trips will depart from the Lower Car Park
(Please do not stand in the driveway)**